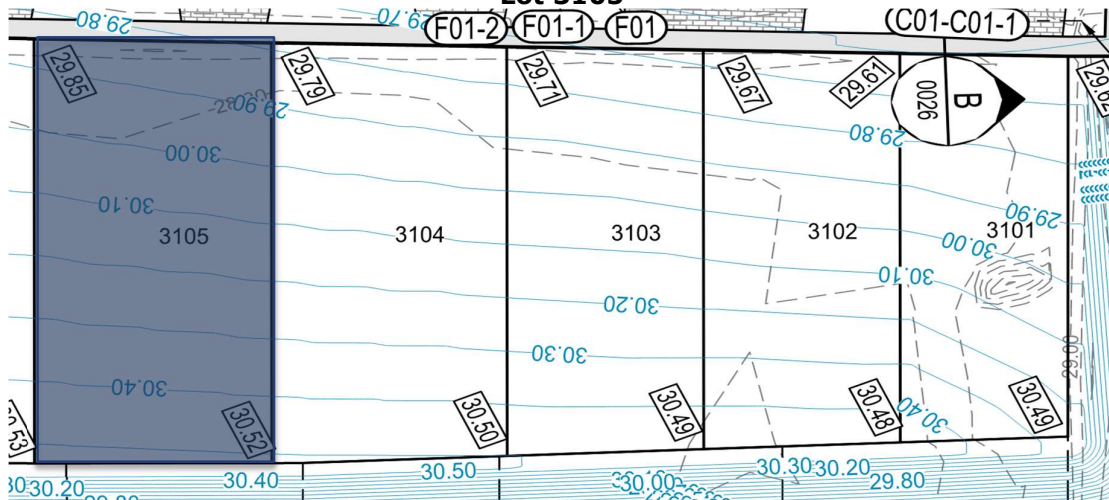



# Controlled Fill Certificate



**Certificate of Controlled Filling**  
**Earthworks Operations (AS3798 – Level 1 Inspection & Testing)**  
**AGTE240454, Miravale Stage 10B**  
**Lot 3105**



 Level 1 Site Area

The filling in the areas as defined above and in the Level 1 Report pertaining to the above mentioned project meets the requirements for “structural fill for residential applications” in accordance with AS3798. The fill has been placed, compacted and tested in accordance with AS3798 and the fill meets the requirements for controlled fill in accordance with AS2870 (2011) “Residential Slabs and Footings”.



Shin To Amiri  
Senior Geotechnical Engineer  
MIE Aust (EA ID: 6820691)  
Ph.D. (Geotechnical Engineering),  
M.Eng. (Geotechnical Engineering)  
B.Eng. (Civil Engineering)  
[shina@ausgeotest.com.au](mailto:shina@ausgeotest.com.au)  
Mob: 0448597976